

Expanding the evidence base for career and technical education

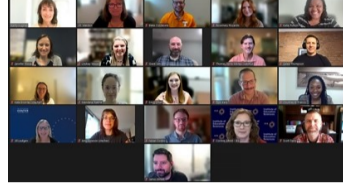
The future looks bright for CTE! We are pleased to announce that our Network will host a [final convening](#) in Crystal City, Virginia, on March 20, 2024. Join us as our research teams discuss their findings and explore the implications for CTE research, practice, and policy. Attendance is free.



As our Network draws to a close in 2024, the Institute of Education Sciences, which funded our 5-year grant, has announced a second CTE Research Network to build on our efforts!

The [new network](#), dubbed the CTE Research Network 2.0, will again be led by Dr. Katherine Hughes of AIR and Dr. Shaun Dougherty of Boston College. It will be a hub for CTE research, research training, leadership, and dissemination of findings to provide information and evidence to the CTE community about what works, for whom, and why. Stay tuned for more information this fall, including a [Request for Applications](#) to join the network. Applications are due January 11, 2024.

We encourage you to follow us on [Twitter](#) and [LinkedIn](#) for the latest news.



New Cohort of Researchers Flex Their CTE Skills in 2023 Training Institute

In August, our fourth cohort of researchers completed the Network’s final CTE Research Training Institute. Selected from more than 100 applicants, the 22 trainees spent 5 intensive days building skills and strategies for conducting high-quality CTE impact studies.

[Read more](#)

Interested in expanding your CTE research skill set? The [CTE Research Network 2.0](#), which launches this fall, will offer research training institutes with a focus on equity.



Recruiting CTE Research Partners: Strategies for a Changing Landscape

As we strive to put the pandemic in our rearview mirror, it is important for CTE researchers and practitioners to reflect on lessons learned and consider new approaches for building strong partnerships with districts and schools. In this blog post, Network member Margaret Hennessy, a K–12 education research associate at MDRC, discusses strategies for recruiting districts and schools to participate in CTE studies in a changing K–12 research landscape.

[Read more](#)



Using an Equity Lens in CTE Research

A new blog series from our Equity in CTE Workgroup delves into each stage in our [Equity Framework for CTE Research](#), designed to help research teams integrate an equity-focused lens across the research life cycle. The series, available on Sage Publications Methodspace, includes two posts with more to come.

- [Using an Equity Lens to Design Your Research](#)
- [Using an Equity Lens in Measurement and Data Collection](#)

RESOURCES

CTE for Climate Jobs: A Framework for Secondary and Postsecondary CTE

In this paper from MDRC, Network member Rachel Rosen examines the effects of the rapid transition to clean energy and how CTE models and pathways can help meet the needs of a changing labor market.

[Read more](#)

The State of CTE: An Analysis of State Secondary CTE Funding Models

This Advance CTE microsite presents an overview of state secondary CTE funding models based on research conducted in 2022 and early 2023. The site includes a report, resources, and a state comparison mapping tool.

[Read more](#)

Why Do Students Participate (or Not) in Dual Enrollment?

This brief from the Early College Research Center at the University of North Carolina at Greensboro reports on why students did or did not participate in two North Carolina dual enrollment pathways: CTE and College Transfer.

[Read more](#)

Framing Parents’ Attitudes Toward CTE

This peer-reviewed journal article proposes a new framework for conceptualizing how to discuss CTE in the public sphere to shape support for CTE-related policies, with implications for both researchers and policymakers.

[Read more](#)

EVENTS

CTE Research Network Session: CTE Dual Enrollment: Participation and Impacts

October 24, 2023 | NACEP 2023 Conference | St. Louis, MO | 3:15–4:00 p.m. EDT

[Learn more](#)

SPOTLIGHT



2024 CTE Research Network Convening

Join us March 20 in Crystal City as our research teams share the latest evidence on the impact of CTE. The event is free and open to the public.

[Read more](#)



Our Network Research Teams and Projects

Learn about our Network research teams, the CTE policies and programs they are studying, and the resources they have developed.

[Read more](#)

Career and Technical Education Research Network

American Institutes for Research
1400 Crystal Drive, 10th Floor
Arlington, VA 22202



CTEResearchNetwork@air.org | cteresearchnetwork.org

Copyright © 2023 American Institutes for Research. All rights reserved.