



February is Career and Technical Education (CTE) Month,<sup>®</sup> an annual public awareness campaign to acknowledge the accomplishments of CTE programs across the country. At the CTE Research Network, we're excited about the growing evidence base showing the benefits of CTE programs for students. Browse our [Research webpage](#) to learn more about our CTE studies and what we're finding. For updates on our work, training opportunities, and events, sign up for our [mailing list](#) and follow us on [Twitter](#) and [LinkedIn](#).

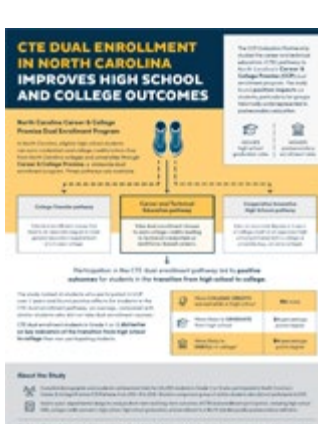
As always, we are grateful for the support of the Institute of Education Sciences (IES) at the U.S. Department of Education. The Department funds a number of [national CTE initiatives](#), including our network.



### Celebrate CTE Month with ACTE's 28 Days of CTE

The [Association for Career and Technical Education](#) (ACTE), which developed CTE Month, is a vital partner in our network's mission to expand the evidence base on CTE's impact. With more than 20,000 members, ACTE has supported CTE professionals for nearly a century. To celebrate CTE Month, check out ACTE's 28 Days of CTE on Twitter.

[Read more](#)



### North Carolina's CTE dual enrollment pathway shows positive impacts for students

A [network study](#) of North Carolina's Career & College Promise dual enrollment program found positive impacts for students in the CTE pathway, including higher rates of high school graduation and postsecondary enrollment. This new infographic summarizes the study's findings.

[Read more](#)



### New reports examine trends and equity in high school CTE

Two new reports from the Career & Technical Education Policy Exchange examine trends in CTE high school participation and equitable access to high-quality CTE, with a focus on Massachusetts, Michigan, Tennessee, and Washington.

[Read more](#)



### Learning from the past: The evolution of vocational education

In this Q&A, MDRC's Center for Effective CTE speaks with Dr. Eddie Fletcher, an associate professor in workforce development and education at Ohio State University. The conversation explores how the CTE field can learn from the vocational education programs of the past to build equitable CTE programs for today.

[Read more](#)

## RESOURCES

#### High School Education and Career Planning: A National Study of Student Characteristics and College-Going Behaviors

This national study conducted by Regional Educational Laboratory (REL) West analyzed the relationships between students' participation in three core elements of education and career planning during high school. The study also looked at student behaviors related to the transition to college.

[Read more](#)

#### Career and Technical Education Credentials in Virginia High Schools: Trends in Attainment and College Enrollment Outcomes

This REL Appalachia study examined CTE credential attainment rates, CTE program completion rates, and college enrollment rates for Virginia Standard diploma graduates from 2011 to 2017. This period covers the years before and after the state added a CTE credential requirement to the Standard diploma.

[Read more](#)

## EVENTS

### February 28 Practitioner Training Modules: Understanding and Using CTE Data and Research

*Educating for Careers Conference, Sacramento, CA*

Join our conference session to learn about our series of free, self-guided training modules designed to help CTE practitioners and state department of education staff strengthen their capacities to access, understand, conduct, and use CTE research and data. (3:00–4:15 p.m. Pacific Time)

[Learn more](#)

### March 21–23 ACTE National Policy Seminar

*Arlington, VA*

ACTE's 2022 National Policy Seminar will address key CTE policy topics and best practices for influencing federal policy related to CTE advocacy and messaging.

[Learn more](#)

### March 27–29 Association for Public Policy Analysis & Management (APPAM) Conference

*Austin, TX*

APPAM's Fall 2021 Conference, rescheduled for spring 2022, will include presentations from several members of our network's research teams. Browse the full list on our Events page.

[Learn more](#)

### April 23 New Evidence on the Effectiveness of Career and Technical Education

*2022 American Educational Research Association (AERA) Annual Meeting, San Diego, CA*

Drawing on our network studies, our symposium at AERA will present new causal evidence on the effectiveness of CTE in different contexts, including whether there are peer effects on the outcomes of student applicants and whether CTE is a cost-effective means to improve student outcomes. (11:30 a.m.–1:00 p.m. Pacific Time)

[Learn more](#)

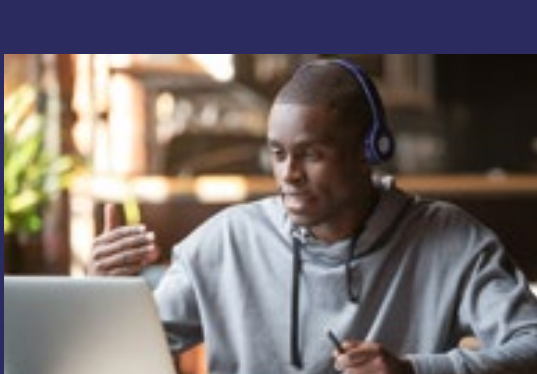
## SPOTLIGHT



### Our network research teams and their studies

Learn about our network research teams and the CTE policies and programs their studies are examining.

[Read more](#)



### How CTE programs responded to the COVID-19 pandemic

We drew on interviews with 22 CTE programs to explore how educators responded to the pandemic.

[Read more](#)



**Career and Technical Education Research Network**  
American Institutes for Research  
1400 Crystal Drive, 10th Floor  
Arlington, VA 22202  
[CTEResearchNetwork@air.org](mailto:CTEResearchNetwork@air.org) | [ctereseachnetwork.org](http://ctereseachnetwork.org)

Sign up for our [newsletter](#) to receive updates on our training opportunities, research activities, and resources.



This document was produced by the CTE Research Network Lead through [Grant R305N180005](#) to the American Institutes for Research (AIR). This grant is supported by the Institute of Education Sciences at the U.S. Department of Education with funds provided under the Carl D. Perkins Career and Technical Education Act. The work of the Network member projects is supported by the Institute. The opinions expressed are those of the authors and do not represent the views of the Institute or the U.S. Department of Education.