



With a new school year underway, the Career and Technical Education (CTE) Research Network is working to expand the evidence base on the impact of CTE. Read on for resources and products from our network, including a new report about how CTE programs responded to the COVID-19 pandemic, a blog post about the importance of addressing equity in CTE research, and two new network studies. We encourage you to browse [our website](#) for more information.



CTE programs and the COVID-19 pandemic: Responses, innovations, and implications for research

Our latest network report presents findings from interviews with 22 CTE programs about their responses to the pandemic, including challenges and lessons learned, innovations developed, and implications for CTE researchers to consider when studying the period.

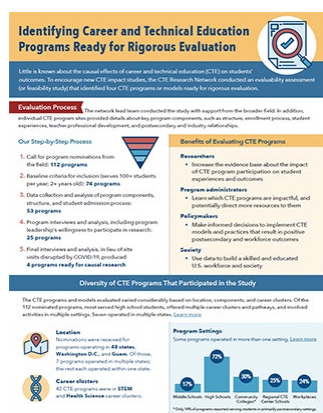
[Read more](#)



A continued focus on equity in CTE

Our network is committed to deepening equity in CTE research and practice. As a first step, we surveyed network members to gauge how they are addressing equity in their research. In this blog post, our Equity in CTE Workgroup highlights key findings and implications.

[Read more](#)



Identifying CTE programs ready for rigorous evaluation

A new network infographic describes the steps and key findings from our [evaluability assessment](#), which examined more than 100 CTE programs to identify those programs ready for rigorous evaluation.

[Read more](#)



New cross-network study explores the role and effects of high school advising for CTE students

Counseling and advising can be critical to high school students' success after graduation, but the impact of advising on CTE students is understudied. A new cross-network research project will generate needed evidence on the role and effects of high school advising on CTE students' postsecondary transitions.

[Read more](#)



An experimental evaluation of the efficacy of Virtual Enterprises

A new network study, being conducted by RAND Corporation and the American Institutes for Research, will provide the first causal evidence on the efficacy and cost-effectiveness of Virtual Enterprises, a year-long high school course in which students run a virtual firm. The randomized controlled trial will include approximately 40 high schools.

[Read more](#)



CTE research is flourishing at IES!

Our network is part of a growing portfolio of CTE research at the National Center for Education Research, part of the Institute of Education Sciences (IES). Learn more about the CTE studies underway in this Inside IES Research blog post, written by Corinne Alfeld.

[Read more](#)

RESOURCES

Indiana and Minnesota students who focused on CTE in high school

This descriptive study from Regional Educational Laboratory Midwest examined how the college and workforce outcomes of Indiana and Minnesota high school graduates who focused on CTE in a single program of study differed from outcomes of graduates who completed fewer or no CTE courses.

[Read more](#)

The impact of CTE on postsecondary outcomes in Nebraska and South Dakota

This impact study from Regional Educational Laboratory Central examined the effect of completing a sequence of CTE courses in high school on Nebraska and South Dakota students' rates of on time high school graduation and postsecondary education enrollment and completion within 2 and 5 years.

[Read more](#)

EVENTS

December 2, 2021

CTE Research Network practitioner training modules: Free resources to better understand and use CTE data and research

ACTE CareerTech VISION 2021, New Orleans, Louisiana (hybrid virtual and in-person event)

Join us at ACTE CareerTech VISION for an in-person session on our series of six self-guided training modules, designed to help CTE practitioners and state department of education staff strengthen their capacities to access, understand, conduct, and use CTE research. The session will include information about freely accessing and using the modules (2:00–2:45 p.m. Central Time).

[Learn more](#)

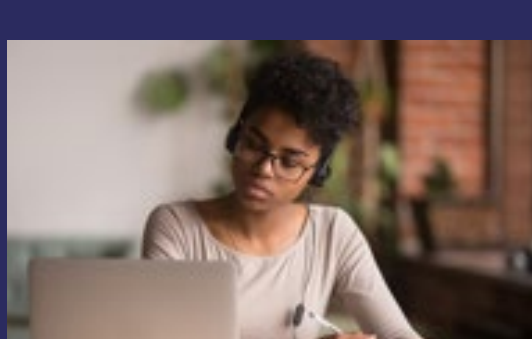
SPOTLIGHT



Our network research teams

Learn about our network research teams and the CTE policies and programs their studies are examining.

[Read more](#)



Practitioner training modules

Become research savvy with our self-guided training modules for CTE practitioners and state agency staff.

[Read more](#)



Career and Technical Education Research Network
American Institutes for Research
1400 Crystal Drive, 10th Floor
Arlington, VA 22202
CTEResearchNetwork@air.org | ctereseachnetwork.org

Sign up for our [newsletter](#) to receive updates on our training opportunities, research activities, and resources.



This document was produced by the CTE Research Network. This grant is supported by the American Institutes for Research (AIR). Lead through [Grant R305N180005](#) to the American Institutes for Research (AIR). This grant is supported by the Institute of Education Sciences at the U.S. Department of Education with funds provided under the Carl D. Perkins Career and Technical Education Act. The work of the Network member projects is supported by the Institute. The opinions expressed are those of the authors and do not represent the views of the Institute or the U.S. Department of Education.