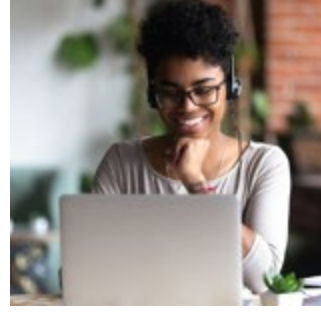




The CTE Research Network has expanded. Read on to learn about our newest research team's project and to browse our latest study findings, training materials, and resources.



New study: Does technology-based advising promote equity in CTE?

Our network is growing! Our newest research team, which is based at MDRC, is studying the efficacy of two widely used technology-based career advising tools—Naviance and YouScience. Follow the links below to learn more.

[Read more](#)

[View study webpage](#)



Equity in CTE: Alignment of mission and methods

As CTE evolves beyond vocational ed—which often relegated low-income students and students of color to low-wage jobs—it's critical that the field continues to address inequities. In this blog post, we discuss strategies for improving equity in CTE research.

[Read more](#)



Bridging the school-to-work divide

How effective are New York City's P-TECH 9–14 schools, which combine accelerated academics with work-based learning and career skills? Interim results from MDRC's causal study show that P-TECH students pass state proficiency exams earlier and at higher rates than comparison students.

[Read the report](#)

[Read the blog post](#)



CTE programs ready for rigorous evaluation: Preliminary findings

After reviewing more than 100 CTE programs nominated by the field, we have identified four that are ready for rigorous evaluation. Read our preliminary report for a description of the programs and how we selected them.

[Read the report](#)

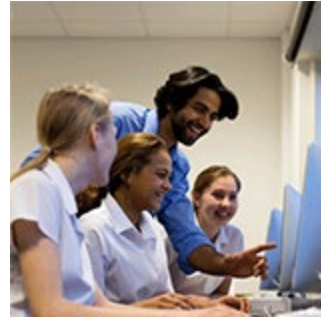
[Read the blog post](#)



How to seek funding to support CTE research partnerships

This final installment in a blog series from Advance CTE and the Institute of Education Sciences explores strategies and opportunities that states can use to establish and fund CTE research partnerships.

[Read more](#)



Research Alliance for New York City Schools blog series

In this series, the Research Alliance for New York City Schools, which participates in our network, uses NYC high school data to chart how CTE offerings and student interest in CTE have evolved over the past decade.

[Read post 1](#)

[Read post 2](#)

RESOURCES

Identification and Counterfactuals for CTE Program Evaluation

Evaluating CTE programs requires identifying a control group of students, or counterfactual. This paper presents a series of case studies assessing the counterfactual for a selection of experimental and quasi-experimental CTE program evaluations.

[Learn more](#)

Breaking Ground: American High School Skilled Trades Education

This report from JFF examines skilled trades education in high schools across the nation. The report provides data on the types of skilled trades programs offered, the students participating, and the students' academic and nonacademic outcomes.

[Learn more](#)

Browse [more CTE resources](#) from the **American Institutes for Research**, one of the partners leading the CTE Research Network.

EVENTS

October 8–9, 2020

ACTE Best Practices and Innovations Conference

Virtual event

This virtual conference co-hosted by the Association for Career and Technical Education (ACTE) and the National Council of Local Administrators of Career and Technical Education (NCLA) focuses on professional development for administrators of secondary and postsecondary CTE.

[Learn more](#)

October 9, 2020

CTE Research Network Practitioner Training Modules: Free Resources to Better Understand and Use CTE Data and Research

ACTE Best Practices and Innovations Conference | Virtual event | 1:00–1:30 p.m. ET

This conference session will preview our coming online Practitioner Training Modules, designed to build the capacity of CTE policymakers and practitioners to use data and research to inform decision making and support continuous improvement.

[Learn more](#)

SPOTLIGHT



Research Teams and Projects

Learn about our network research teams and the CTE policies and programs their studies are examining.

[Read more](#)



College Completion Network

Learn more about our sister research network in this new video on the benefits of research collaboration.

[Read more](#)



Career and Technical Education Research Network
American Institutes for Research
1000 Thomas Jefferson Street, NW
Washington, DC 20007
CTEResearchNetwork@air.org | cteresearchnetwork.org



This document was produced by the CTE Research Network Lead through [Grant R305N180005](#) to the American Institutes for Research (AIR). This grant is supported by the Institute of Education Sciences at the U.S. Department of Education with funds provided under the Carl D. Perkins Career and Technical Education Act. The work of the Network member projects is supported by the Institute. The opinions expressed are those of the authors and do not represent the views of the Institute or the U.S. Department of Education.